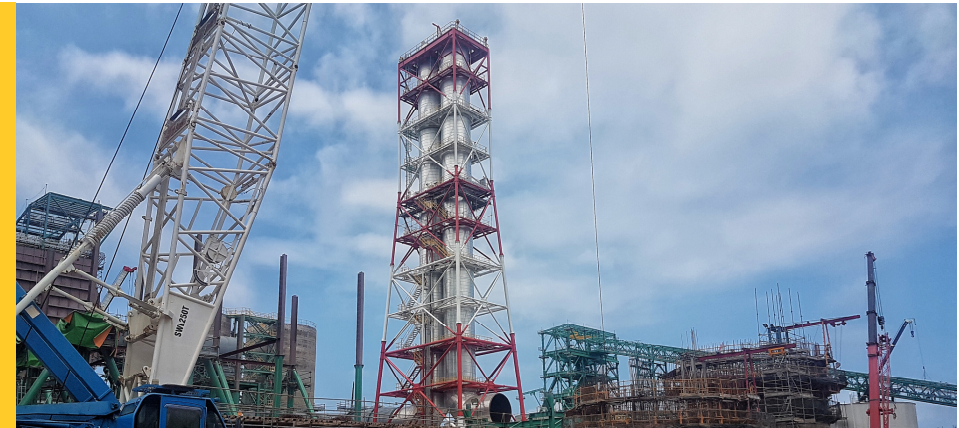


Project Participants

Owner	PT.Asahimas Chemical
Client	Formosa Heavy Industries Corporation
Chimney EPC Contractor	Balanced Engineering and Construction Pte Ltd.
Lining System	SCR-TEN 2

CHIMNEY DESIGN AND BUILD

ASC PROJECT



PT Asahimas Chemical (ASC) a subsidiary of Asahi Glass Co Ltd (AGC) was constructing a 2x 151.5 MW CFB Boiler Power Plant in Indonesia. Formosa Heavy Industries Corp. was the main EPC Contractor.

ASC Project, Indonesia

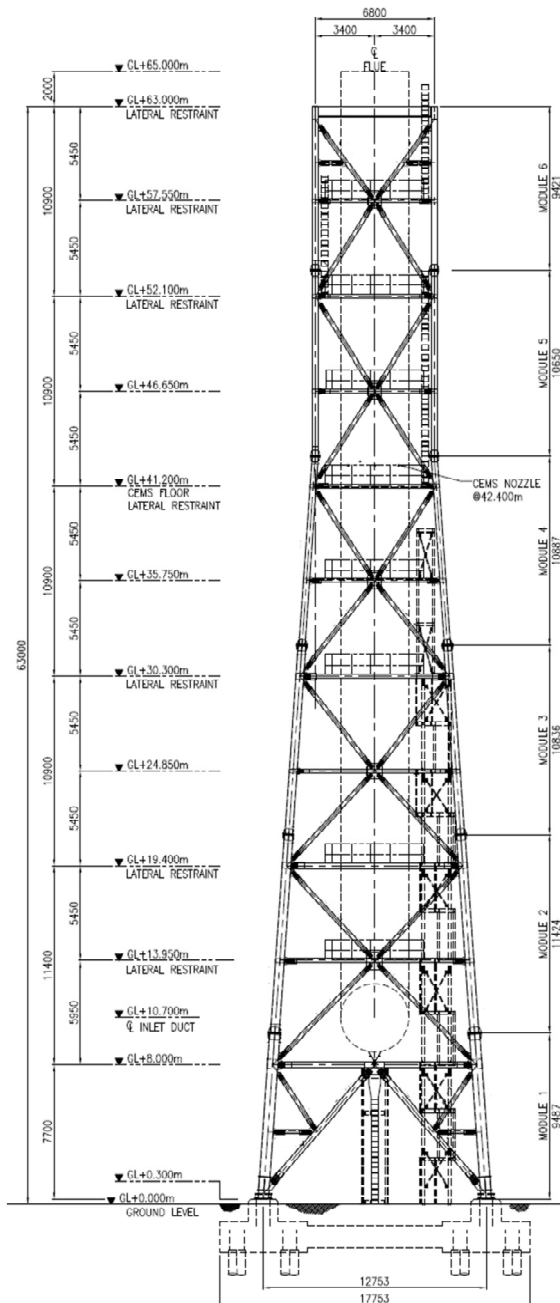
The power plant to be constructed will be a coal-fired power plant (having a generation capacity of approximately 250 MW) that uses low-grade coal of Indonesia, whose reserve is large and which can be obtained easily. It will adopt the high efficient, environmentally-friendly CFB method, which is capable of co-generation and mixed burning of biomass fuel.

Detail of work by BEC

BEC was involved in the Design & Construction of the steel frame chimney, including supply and fabrication of steelwork frame and flues, erection of the steel frame and platforms, heavy lifting of flues, installation of AWLs, lighting, lightning conductor and earthing works. The project was completed and handed over on schedule.

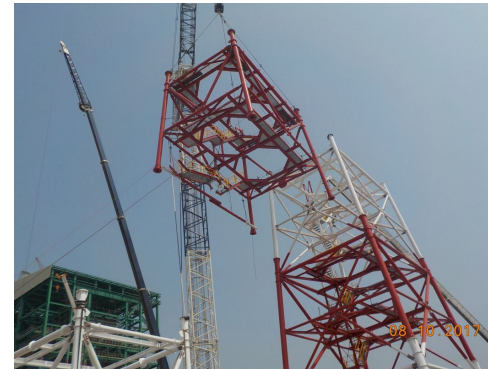
Challenges

- Limited area during frame preassembly.

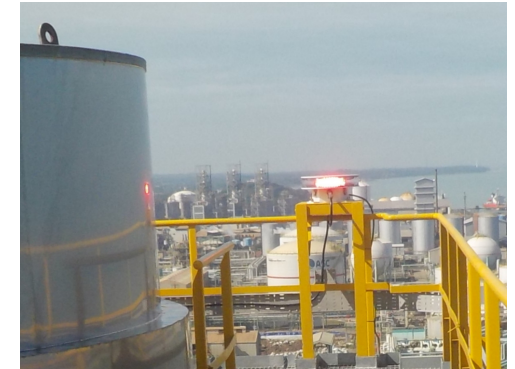


ASC Project, Steel Frame elevation

Chimney Data	
Height	65m
No. of steel flue	2
No. of platforms	8
Diameter of internal flue	3.900m
Piles	24nos x 1m diameter x 14.950m long each
Pile Cap	4 nos x 8m x 5m x 3.1m deep



Erection of the steel frame



Installation of Aircraft Warning Light



Completed Steel Frame Stack



Access Platform



Entry Duct