

CASE STUDY

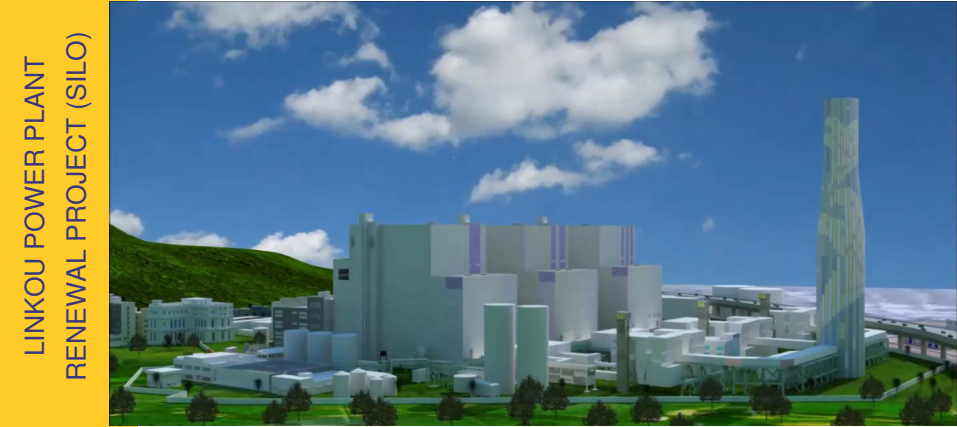
LINKOU POWER PLANT RENEWAL PROJECT (SILO)



Project Participants

- Owner**
Taiwan Power Company (Taipower)
- Client**
CTCI Corporation
- Silo EPC Contractor**
BEC Pte. Ltd.(Taiwan Branch)

SILO DESIGN AND BUILD



Taiwan Power Company (TPC) were constructing a 800MW x3 coal fired power plant to replace the existing 600MW power plant in Linkou District, New Taipei, Taiwan. The consortium consisting of Mitsubishi Heavy Industry, Ltd. and CTCI Corporation were the main contractor for this project.

Linkou Power Plant Renewal Project, Taiwan

Due to the existing Taipower's Linkou 600MW Power Plant have approach its 40th year of operation and the country faced with heavy strain on the island's power supply, Taiwan Power Company (Taipower) opted for the renewal project with coal-fired ultra supercritical-pressure (USC) power plant. USC power plant operate at temperatures and pressure above those at which the liquid and gas phases of water coexist in equilibrium, resulting better efficiencies and less coal per megawatt-hour, leaving to lower emissions (including carbon dioxide and mercury) and lower fuel costs per megawatt.

Detail of work by BEC

BEC was awarded the Design & Build package for the 2 x 48.3m height silos including pile cap, slipform, roof, floors, external staircase and external wall painting.

Challenges

- Very limited site space was available to BEC.
- Stringent local design requirements – earthquake zone



BEC Group of Companies
 c/o 18 Boon Lay Way
 #10-159/162
 TradeHub 21
 Singapore 609966

Tel: +65 6778 6858
Fax: +(65) 6690 9259
Website: www.be-con.com
Email: sales@be-con.com



