

# CASE STUDY STACKS INSPECTION WORKS FOR RABIGH POWER COMPANY



## Project Participants

- Client  
Rabigh Power Company
- Chimney Contractor  
Balanced Eng. & Cons. Pte Ltd.
- Lining System  
Steel Stack with Borosilicate Lining System

## STACKS INSPECTION WORKS FOR RABIGH POWER COMPANY



Rabigh Power Company (RPC) operates as a utility company. The Company focuses on focus on asset management, operations, and maintenance of the plant. Rabigh Power Company serves customers in Saudi Arabia

## Rabigh IWSP

Situated approximately 160 km North of Jeddah, the RAWEC owned Rabigh Independent Water Steam Power Producer (IWSP) is located within the Rabigh Complex, the integrated refinery and petrochemical facility jointly owned by the 50/50 joint venture of Saudi Aramco and Sumitomo Chemical of Japan, and the largest Foreign Direct Investment in Saudi Arabia. (22.705621, 39.017356). The Plant consists of a highly reliable combination of equipment, which efficiently and cost effectively produces environmentally acceptable electricity, water and steam. The plant was designed to operate fully loaded at the contracted capacity throughout the year, ensuring ease of operation, producing utilities in an economically sustainable manner, and minimizing life cycle cost.

## Detail of work by BEC

BEC was awarded the inspection work packages and some maintenance works for the three (3) x 95m steel stacks. The work scopes including visual inspection of internal borosilicate blocks lining, external inspection of steel flue, steel frame, flue support points and access structural (such as ladder and platforms), inspection of electrical items (such as aircraft warning lights, lightings, cables, lightning conductor system etc.), replacement of borosilicate blocks, renewal of CEMS tubing and servicing of aircraft warning lights.

## Challenges

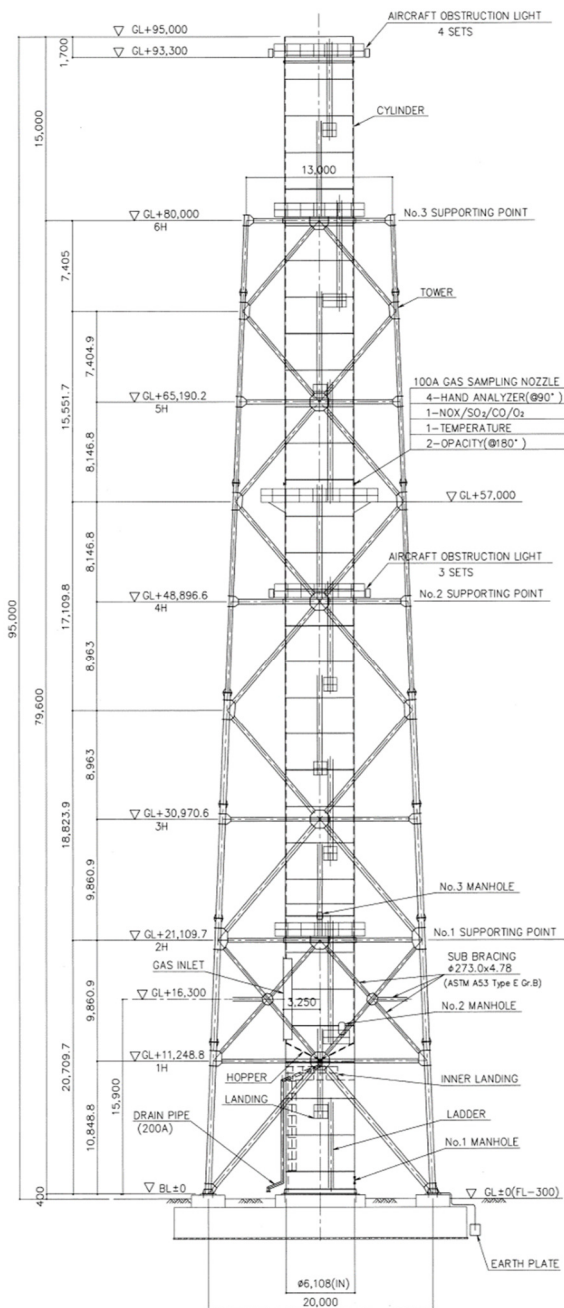
- Tight schedule and tight budget, but completed on time
- Carry out the works during COVID-19 lockdown



**BEC Group of Companies**  
c/o 18 Boon Lay Way  
#10-159/162  
TradeHub 21  
Singapore 609966

**Tel:** +65 6778 6858  
**Fax:** +(65) 6690 9259  
**Website:** www.be-con.com  
**Email:** sales@be-con.com

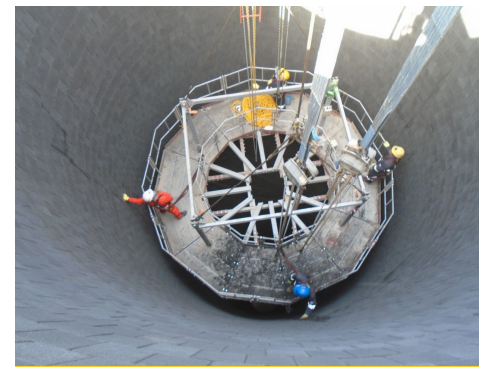




Lifting of internal access platform



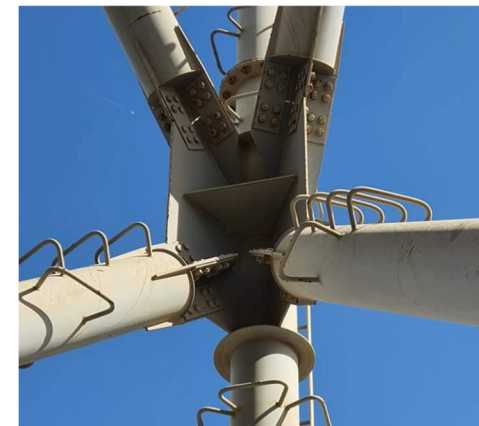
Inspection of Steel Stack



Internal Inspection of Borosilicate Blocks Lining



Servicing of AWL



Inspection of structural connection



Ultrasonic Thickness Gauge Inspection